

# UTOPIA

2021 PROJECT

MURRAY 011-001 - UTAH



GENERAL UDOT NOTES

- 1) Work on the UDOT right-of-way is restricted from October 15 – April 15.
- 2) Call your Inspector 24 hours before starting work and 48 hours before placing materials in UDOT's right of way.
- 3) Any new pavement markings or pavement markings that are removed from the highway are to be replaced with in kind materials such as 3M tape, thermoplastic, etc. All paint lines are to be installed with permanent paint application before completion of the permit and must have at least 6 months life as determined by UDOT's permits officer.
- 4) Work is not allowed on the right-of-way during the AM/PM peak traffic hours (6:00 – 9:00 AM and 3:30 – 6:00 PM) or as specified in your permit limitations.
- 5) Before commencing work on the State highway, the contractor who is awarded the project must have a performance bond uploaded into their online application in order to obtain an encroachment permit from the Region Two Permits Office, and provide proof of liability insurance in the name of the Utah Department of Transportation. The minimum amount is \$1,000,000.00 per occurrence and \$2,000,000.00 in aggregate. For details contact 801-975-4808.
- 6) Contractor must follow the MOT that was submitted and approved for that specific job. Any alterations to the approved traffic control plan is grounds to have your permit revoked.
- 7) UDOT approved flowable fill (36") minimum is required under the pavement of all road cuts.
- 8) All Asphalt joints must be saw-cut at right angles to the roadway and all edges must be cleaned and tack coated prior to replacing the new asphalt pavement. All over-cuts must be sealed with a UDOT approved epoxy sealant.
- 9) UDOT requires 12" of granular borrow; 6" untreated base course and 7" of a UDOT approved PG-64 or better asphalt.
- 10) Excavations outside of the asphalt must be back filled with UDOT approved granular borrow and road base compacted in 6" lifts and meet 97% compaction under roadways and 96% for all else.
- 11) You will be required to hire an approved independent company for all testing with in the UDOT right of way at contractor's expense.
- 12) You and your contractor are responsible for any damage to the UDOT Right- of-Way that may be directly or indirectly caused by your development.
- 13) Work on a traffic signal or signal installation will require a separate bond that will be determined once the work has been approved. An independent inspection company will be required for you to hire for inspection of the work on and/or installation of the traffic signal. For a list of the UDOT approved contractors and consultants contact Dave Mount with UDOT Region 2 Traffic Signals at 801-330-4446. I must have his approval before I can issue a permit for signal work.
- 14) For concrete panel replacement, you must replace the entire panel per UDOT standards and specifications, and UDOT standard drawings PV 2-5 or the current UDOT standard (02754S) whichever is specified on your permit.
- 15) Double cut the concrete to prevent the spalling of other concrete panels and to avoid over-cuts. Over-cuts and spalls will require full panel replacement.
- 16) All plans and drawings must conform to the most recent edition of the Utah Department of Transportation's "Standard Drawings" and "Standard Specifications" including all supplemental specs and drawings.
- 17) All permits are subject to the Utah Department of Transportation's (UDOT's) Regulations for the Accommodation of Utilities on Federal Aid and Non Federal-Aid Highway Right-of-Way, Regulations for the Control and Protection of State Highway Rights of Way, Standard Specifications for Road and Bridge Construction, UDOT Specifications for Excavation of State Highway, State Occupational Safety and Health Laws, Instructions to Flaggers, American Association of State Highway and Transportation Official's "Policy on Geometric Design of Highways and Streets" and the Federal Highways Administration "Manual on Uniform Traffic Control Devices" the approved plans, and any special limitations set forth on the approved permit.
- 18) Plans should be submitted on one legible size 24" X 36" and one 11" X 17" A PDF copy may be required for the permit application.
- 19) Plates that are used to cover open trenches must be milled into the asphalt and meet UDOT standard TC-1 (19).
- 20) All work on the interstates will require message boards placed in both directions a week prior to the start of work stating: there will be lane restrictions in this area due to (utility installation type and contact name). UDOT Traffic Operations Center is to be notified of all traffic impacts (801-887-3700).

PERMITS

AGENCY

SHEET(S)

REVISIONS

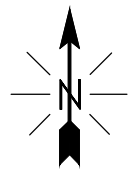
PAGE

REVISION

DATE

LIST OF ASSUMPTIONS

1. THERE ARE NO CENTURYLINK POLES BEING ATTACHED TO.
2. THE CONTRACTOR WILL BE RESPONSIBLE FOR SUBMITTING A TRAFFIC PLAN AND OBTAINING ALL UDOT PERMITS.

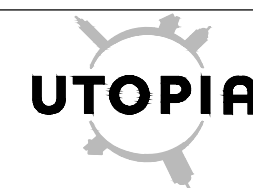


NOTES:

LEGEND

- FOOTPRINT BORDER
- STREET CENTERLINE
- PARCEL BOUNDARIES
- OHP OVERHEAD POWER
- W WATER LINE
- SS SEWER LINE
- RAILROAD
- EOP EDGE OF PAVEMENT
- BOC BACK OF CURB
- R\W RIGHT-OF-WAY
- S\W SIDEWALK
- DROP WIRE
- BORE BORE
- A AERIAL FIBER
- SUCCESS BASED CONDUIT
- TRENCH
- EXISTING FIBER
- ANCHOR SYMBOLS
- BACKBONE
- CABINET
- MDU LINE

CALL BEFORE DIGGING  
BLUE STAKES UTILITY  
1(800) 662-4111



|                  |             |                |     |
|------------------|-------------|----------------|-----|
| UTOPIA           |             | JOB NUMBER     | REV |
| 2021 PROJECT     |             |                | 3   |
| MU011-001 - UTAH |             | DRAWING NUMBER |     |
|                  |             | MU011-PERMIT   |     |
| REV              | REVISIONS   | DATE           | DRN |
| 2                | DCID'S      | 4/2021         | MSC |
| 1                | REVIEW ONLY | 1/2021         | MSC |
| DRN              | MSC         |                |     |
| CKD              | MSC         |                |     |
| DSGN             | MSC         |                |     |
| APPD             | MSC         |                |     |
| SCALE:           | NTS         |                |     |

THIS DRAWING WAS PREPARED BY MID-STATE CONSULTANTS, INC. FOR A SPECIFIC PROJECT, TAKING INTO CONSIDERATION THE SPECIFIC AND UNIQUE REQUIREMENTS OF THE PROJECT. REUSE OF THIS DRAWING OR ANY INFORMATION CONTAINED IN THIS DRAWING FOR ANY PURPOSE IS PROHIBITED UNLESS WRITTEN PERMISSION FROM UTAH TELECOMMUNICATIONS OPEN INFRASTRUCTURE AGENCY (UTOPIA) IS GRANTED.

FILE



1

2

3

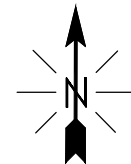
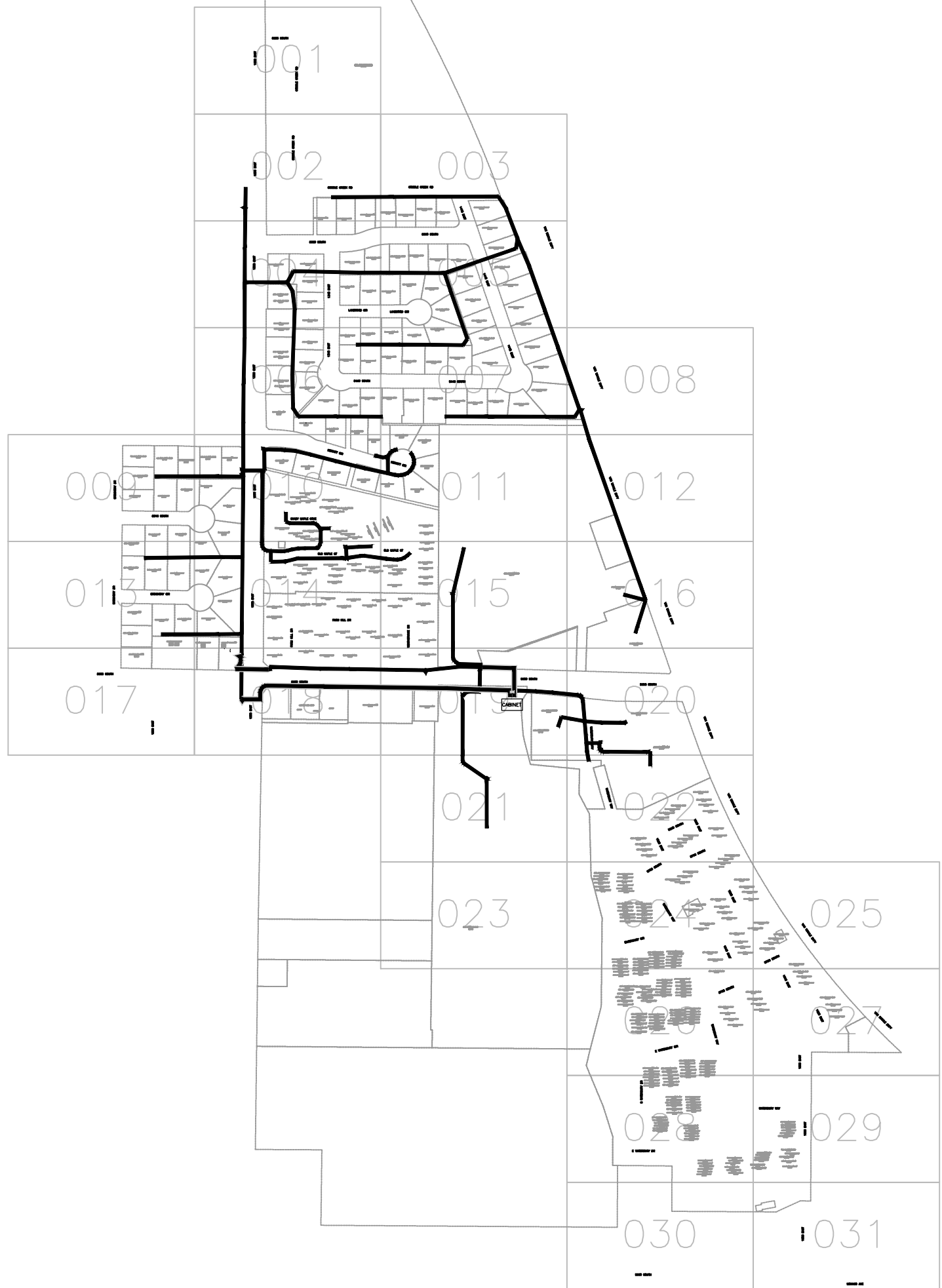
4

5

6

7

8



NOTES:

LEGEND

- FOOTPRINT BORDER
- STREET CENTERLINE
- PARCEL BOUNDARIES
- OHP OVERHEAD POWER
- W WATER LINE
- SS SEWER LINE
- RAILROAD
- EOP EDGE OF PAVEMENT
- BOC BACK OF CURB
- R/W RIGHT-OF-WAY
- S/W SIDEWALK
- DROP WIRE
- BORE BORE
- A AERIAL FIBER
- SUCCESS BASED CONDUIT
- TRENCH
- EXISTING FIBER
- ANCHOR SYMBOLS
- BACKBONE
- CABINET
- MDU LINE

LEGEND

- R/L LOCATION
- EX. CONDUIT
- SHEET

CALL BEFORE DIGGING  
 BLUE STAKES UTILITY  
 1(800) 662-4111



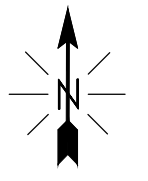
|                  |  |                |     |
|------------------|--|----------------|-----|
| UTOPIA           |  | JOB NUMBER     | REV |
| 2021 PROJECT     |  |                | 3   |
| MU011-001 - UTAH |  | DRAWING NUMBER |     |
|                  |  | MU011-SCHMATIC |     |



| REV    | REVISIONS   | DATE   | DRN   | CKD | DSGN | APPD |
|--------|-------------|--------|---|-----|------|------|
| 2      | DCID'S      | 4/2021 | MSC   | MSC | MSC  |      |
| 1      | REVIEW ONLY | 1/2021 | MSC   | MSC | MSC  |      |
| DSGN   | MSC         | *      | THIS DRAWING WAS PREPARED BY MID-STATE CONSULTANTS, INC. FOR A SPECIFIC PROJECT, TAKING INTO CONSIDERATION THE SPECIFIC AND UNIQUE REQUIREMENTS OF THE PROJECT. REUSE OF THIS DRAWING OR ANY INFORMATION CONTAINED IN THIS DRAWING FOR ANY PURPOSE IS PROHIBITED UNLESS WRITTEN PERMISSION FROM UTAH TELECOMMUNICATIONS OPEN INFRASTRUCTURE AGENCY (UTOPIA) IS GRANTED. |     |      |      |
| DRN    | MSC         | *      |   |     |      |      |
| CKD    | MSC         | *      |   |     |      |      |
| SCALE: | NTS         |        |   |     |      |      |







NOTES:

**LEGEND**

- FOOTPRINT BORDER
- STREET CENTERLINE
- PARCEL BOUNDARIES
- OHP OVERHEAD POWER
- W WATER LINE
- SS SEWER LINE
- RAILROAD
- EOP EDGE OF PAVEMENT
- BOC BACK OF CURB
- R\W RIGHT-OF-WAY
- S\W SIDEWALK
- DROP WIRE
- BORE BORE
- A AERIAL FIBER
- SUCCESS BASED CONDUIT
- TRENCH
- EXISTING FIBER

- THE PREFERRED CONSTRUCTION METHOD IS DIRECTIONAL BORE. THE FOLLOWING PLACEMENT WILL BE USED DURING FIELD DESIGN:
1. BACK OF CURB
  2. BACK OF SIDEWALK (WITHIN UTILITY EASEMENT)
  3. BENEATH SIDEWALK NOTE: CONCRETE RESTORATIONS WILL BE REQUIRED
  4. EDGE OF ROAD (ASPHALT) NOTE: ASPHALT RESTORATION WILL BE REQUIRED

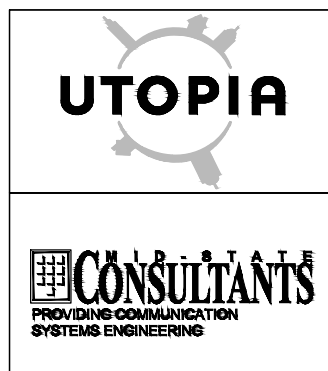
CALL BEFORE DIGGING  
BLUE STAKES UTILITY  
1(800) 662-4111

| ITEM    | UNIT        | QUANTITY   | DESCRIPTION  | ITEM | UNIT | QUANTITY | DESCRIPTION |
|---------|-------------|------------|--|------|------|----------|-------------|
| 101     | LINFT       | 6-(24")    | TRENCH DIRT (DEPTH)                                |      |      |          |             |
| 124     | FT          | 6          | PL. IN TRENCH - 4" PVC SCHEDULE 40                 |      |      |          |             |
| 300     | FT          | 6          | PL. IN CONDUIT - 1 LOCATE WIRE                     |      |      |          |             |
| 321R    | FT-EA CABLE | 20-48 FOC  | PL. IN CONDUIT/CASING RISER - (< OR = 96 FOC)      |      |      |          |             |
| 520A    | SQFT        | 25         | SOD R&R - AT & AROUND HH ONLY                      |      |      |          |             |
| 600-10  | EA          | 1          | AERIAL SPLICE CLOSURE & PREP ( < / = 72 CNT)       |      |      |          |             |
| 723A    | FT          | 232-24 FOC | PLACE FIBER OPTIC CABLE AERIAL                     |      |      |          |             |
| 723B    | FT-EA CABLE | 25-48 FOC  | FIBER OPTIC SLACK STORAGE CABLE IN HH FP OR AERIAL |      |      |          |             |
| 736B    | FT          | 232        | EXTRA HIGH STRENGTH STEEL STRAND 1/4" (INT)        |      |      |          |             |
| (1)750B | FT-EA CABLE | 232        | DOUBLE LASH FOC TO STRAND (INT)                    |      |      |          |             |
| HH-3    | EA          | 1          | HANDHOLE (LARGE > 36")                             |      |      |          |             |

| POLE   | HARDWARE        |
|--------|-----------------|
| 089009 | 791 N-LX66 SD-4 |

KEY MAP

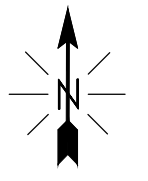
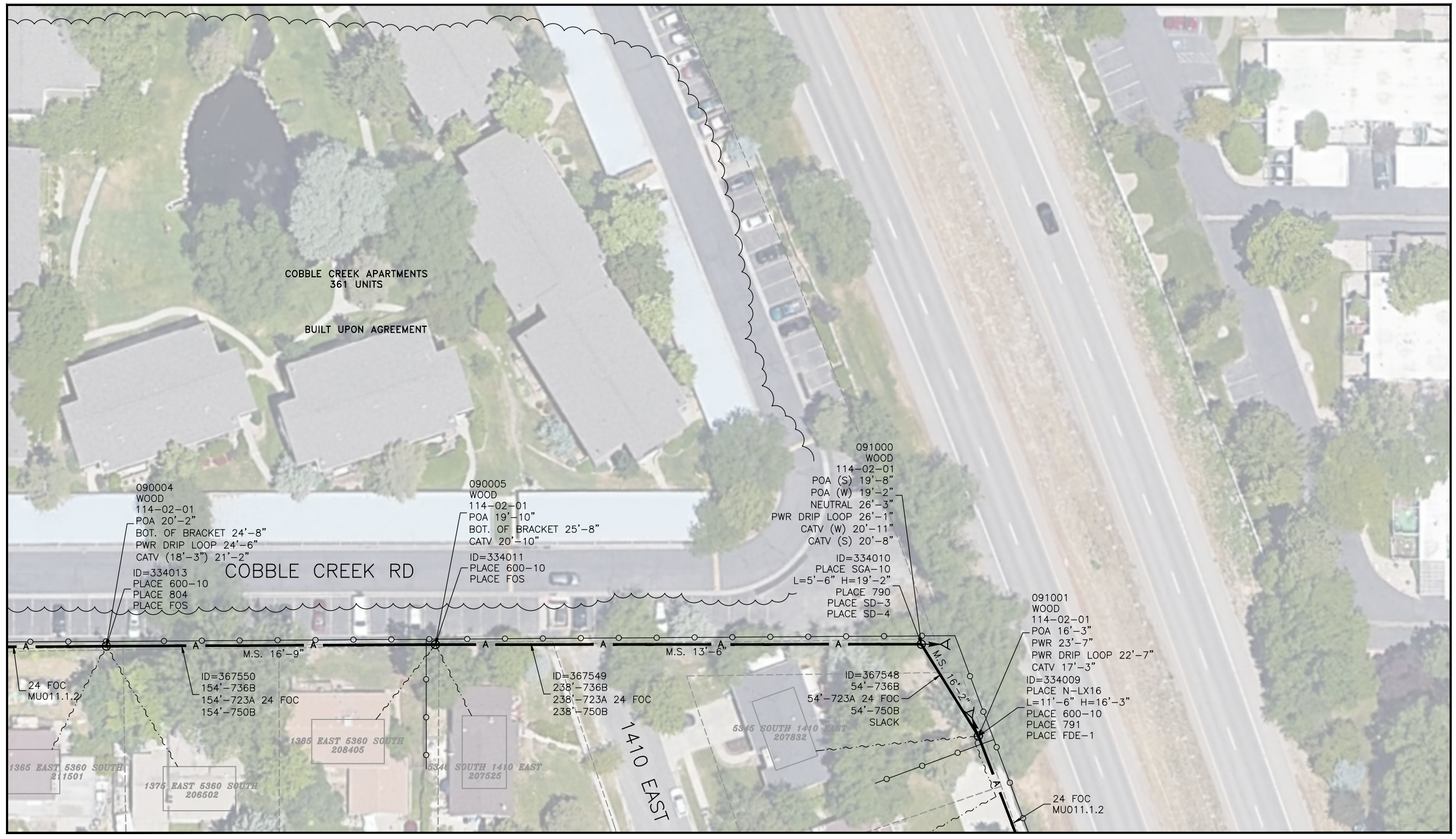
|     |     |
|-----|-----|
| 001 |     |
| 002 | 003 |
| 004 | 005 |



| UTOPIA           |             | JOB NUMBER  | REV         |     |      |      |
|------------------|-------------|---|-------------|-----|------|------|
| 2020 PROJECT     |             |   | 3           |     |      |      |
| MU011-001 - UTAH |             | DRAWING NUMBER MU011-002  |             |     |      |      |
| 2                | DCID'S      | 4/2021  | MSC MSC MSC |     |      |      |
| 1                | REVIEW ONLY | 12/2020   | MSC MSC MSC |     |      |      |
| REV              | REVISIONS   | DATE  | DRN         | CKD | DSGN | APPD |
| DSGN             | MSC         | *   |             |     |      |      |
| DRN              | MSC         | *   |             |     |      |      |
| CKD              | MSC         | *   |             |     |      |      |
| SCALE: 1" = 50'  |             | THIS DRAWING WAS PREPARED BY MID-STATE CONSULTANTS, INC. FOR A SPECIFIC PROJECT, TAKING INTO CONSIDERATION THE SPECIFIC AND UNIQUE REQUIREMENTS OF THE PROJECT. REUSE OF THIS DRAWING OR ANY INFORMATION CONTAINED IN THIS DRAWING FOR ANY PURPOSE IS PROHIBITED UNLESS WRITTEN PERMISSION FROM UTAH TELECOMMUNICATIONS OPEN INFRASTRUCTURE AGENCY (UTOPIA) IS GRANTED. |             |     |      |      |

FILE





**NOTES:**

**LEGEND**

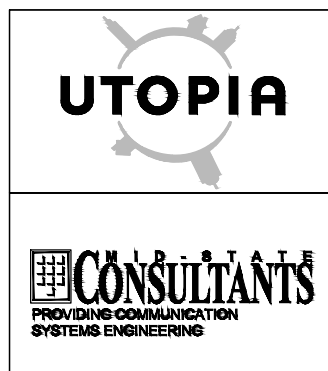
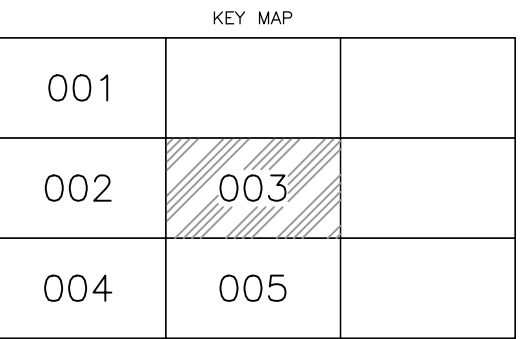
- FOOTPRINT BORDER
- STREET CENTERLINE
- PARCEL BOUNDARIES
- OHP OVERHEAD POWER
- W WATER LINE
- SS SEWER LINE
- RAILROAD
- EOP EDGE OF PAVEMENT
- BOC BACK OF CURB
- R'W RIGHT-OF-WAY
- S'W SIDEWALK
- DROP WIRE
- BORE
- A AERIAL FIBER
- SUCCESS BASED CONDUIT
- TRENCH
- EXISTING FIBER

- THE PREFERRED CONSTRUCTION METHOD IS DIRECTIONAL BORE. THE FOLLOWING PLACEMENT WILL BE USED DURING FIELD DESIGN:
1. BACK OF CURB
  2. BACK OF SIDEWALK (WITHIN UTILITY EASEMENT)
  3. BENEATH SIDEWALK  
NOTE: CONCRETE RESTORATIONS WILL BE REQUIRED
  4. EDGE OF ROAD (ASPHALT) NOTE: ASPHALT RESTORATION WILL BE REQUIRED

CALL BEFORE DIGGING  
BLUE STAKES UTILITY  
1(800) 662-4111

| ITEM    | UNIT        | QUANTITY | DESCRIPTION                                 | ITEM | UNIT | QUANTITY | DESCRIPTION |
|---------|-------------|----------|---|------|------|----------|-------------|
| 600-10  | EA          | 3        | AERIAL SPLICE CLOSURE & PREP ( </= 72 CNT)  |      |      |          |             |
| 723A    | FT          | 446-24   | FOC PLACE FIBER OPTIC CABLE AERIAL          |      |      |          |             |
| 736B    | FT          | 446      | EXTRA HIGH STRENGTH STEEL STRAND 1/4" (INT) |      |      |          |             |
| (1)750B | FT-EA CABLE | 446      | DOUBLE LASH FOC TO STRAND (INT)             |      |      |          |             |

| POLE   | HARDWARE |       |        |        |
|--------|----------|-------|--------|--------|
| 090004 | 804      | FOS   |        |        |
| 090005 | FOS      |       |        |        |
| 091000 | 790      | SD-3  | SD-4   | SGA-10 |
| 091001 | 791      | FDE-1 | N-LX16 |        |

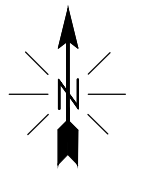
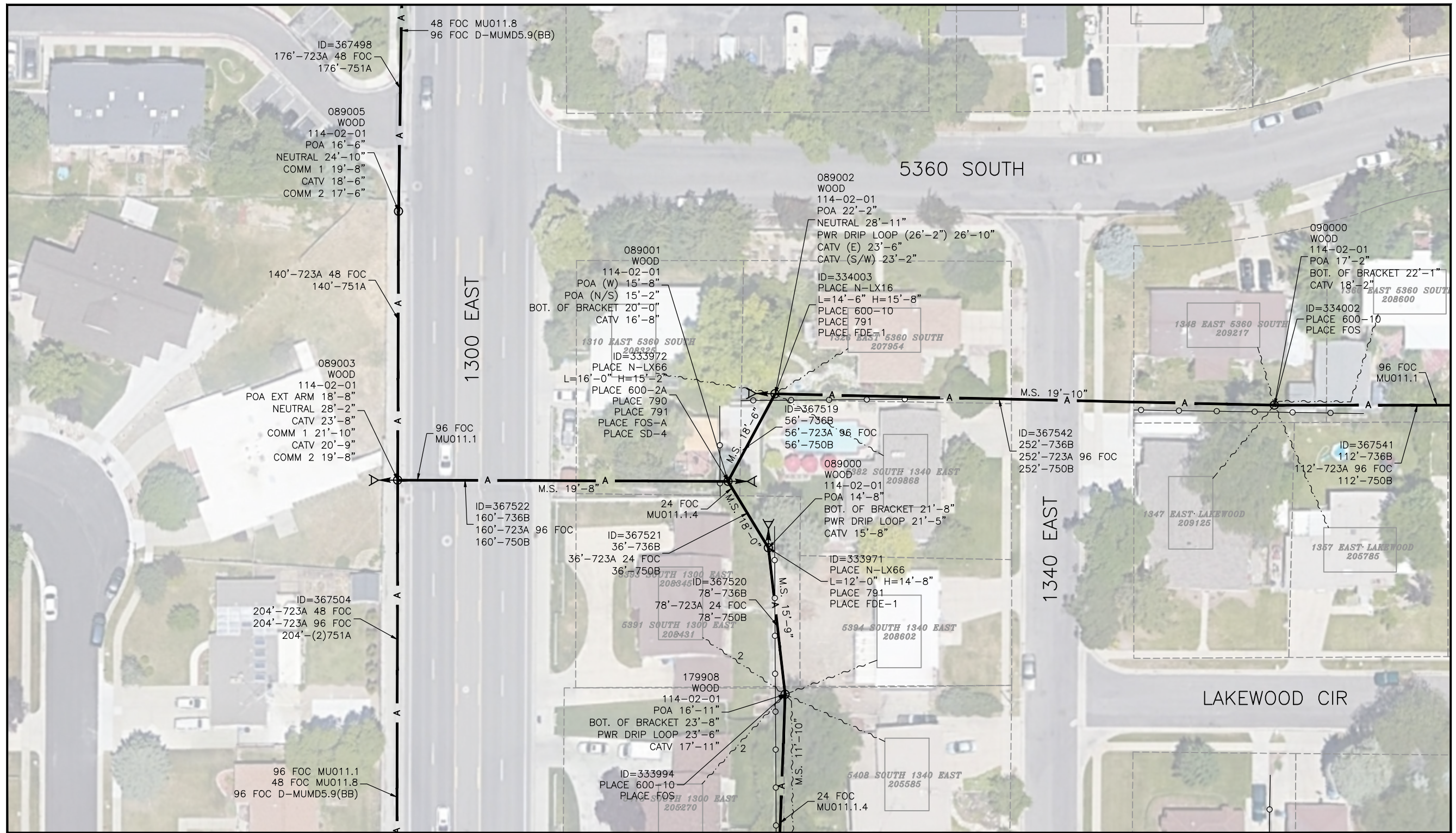


| UTOPIA           |             | JOB NUMBER     |     | REV |
|------------------|-------------|----------------|-----|-----|
| 2020 PROJECT     |             |                |     | 3   |
| MU011-001 - UTAH |             | DRAWING NUMBER |     |     |
|                  |             | MU011-003      |     |     |
| 2                | DCID'S      | 4/2021         | MSC | MSC |
| 1                | REVIEW ONLY | 12/2020        | MSC | MSC |
| REV              | REVISIONS   | DATE           | DRN | CKD |
| DSGN             | MSC         | *              |     |     |
| DRN              | MSC         | *              |     |     |
| CKD              | MSC         | *              |     |     |
| SCALE:           |             | 1" = 50'       |     |     |

THIS DRAWING WAS PREPARED BY MID-STATE CONSULTANTS, INC. FOR A SPECIFIC PROJECT, TAKING INTO CONSIDERATION THE SPECIFIC AND UNIQUE REQUIREMENTS OF THE PROJECT. REUSE OF THIS DRAWING OR ANY INFORMATION CONTAINED IN THIS DRAWING FOR ANY PURPOSE IS PROHIBITED UNLESS WRITTEN PERMISSION FROM UTAH TELECOMMUNICATIONS OPEN INFRASTRUCTURE AGENCY (UTOPIA) IS GRANTED.

FILE





**NOTES:**

**LEGEND**

- FOOTPRINT BORDER
- STREET CENTERLINE
- PARCEL BOUNDARIES
- OHP OVERHEAD POWER
- W WATER LINE
- SS SEWER LINE
- RAILROAD
- EOP EDGE OF PAVEMENT
- BOC BACK OF CURB
- RW RIGHT-OF-WAY
- SW SIDEWALK
- DROP WIRE
- BORE BORE
- A AERIAL FIBER
- SUCCESS BASED CONDUIT
- TRENCH
- EXISTING FIBER

- THE PREFERRED CONSTRUCTION METHOD IS DIRECTIONAL BORE. THE FOLLOWING PLACEMENT WILL BE USED DURING FIELD DESIGN:
1. BACK OF CURB
  2. BACK OF SIDEWALK (WITHIN UTILITY EASEMENT)
  3. BENEATH SIDEWALK  
NOTE: CONCRETE RESTORATIONS WILL BE REQUIRED
  4. EDGE OF ROAD (ASPHALT) NOTE: ASPHALT RESTORATION WILL BE REQUIRED

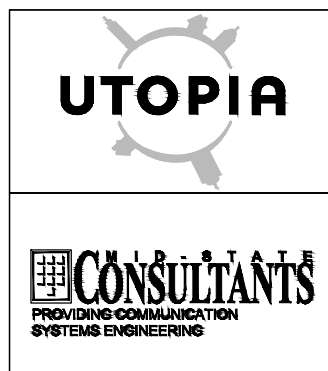
CALL BEFORE DIGGING  
BLUE STAKES UTILITY  
1(800) 662-4111

| ITEM    | UNIT        | QUANTITY | DESCRIPTION   | ITEM | UNIT | QUANTITY | DESCRIPTION |
|---------|-------------|----------|---|------|------|----------|-------------|
| 600-10  | EA          | 3        | AERIAL SPLICE CLOSURE & PREP ( </= 72 CNT)            |      |      |          |             |
| 600-2A  | EA          | 1        | SPLICE CLOSURE & PREP (AERIAL) (STANDARD </= 144 CNT) |      |      |          |             |
| 723A    | FT          | 114-24   | FOC PLACE FIBER OPTIC CABLE AERIAL                    |      |      |          |             |
| 723A    | FT          | 520-48   | FOC PLACE FIBER OPTIC CABLE AERIAL                    |      |      |          |             |
| 723A    | FT          | 784-96   | FOC PLACE FIBER OPTIC CABLE AERIAL                    |      |      |          |             |
| 736B    | FT          | 694      | EXTRA HIGH STRENGTH STEEL STRAND 1/4" (INT)           |      |      |          |             |
| (1)750B | FT-EA CABLE | 694      | DOUBLE LASH FOC TO STRAND (INT)                       |      |      |          |             |
| (1)751A | FT          | 316      | OVERLASH FIBER OPTIC CABLE (RDSIDE)                   |      |      |          |             |
| (2)751A | FT          | 408      | OVERLASH FIBER OPTIC CABLE (RDSIDE)                   |      |      |          |             |

| POLE   | HARDWARE |                  |
|--------|----------|------------------|
| 089000 | 791      | FDE-1 N-LX66     |
| 089001 | 790      | 791 FOS-A N-LX66 |
|        |          | SD-4             |
| 089002 | 791      | FDE-1 N-LX16     |
| 090000 |          | FOS              |
| 179908 |          | FOS              |

KEY MAP

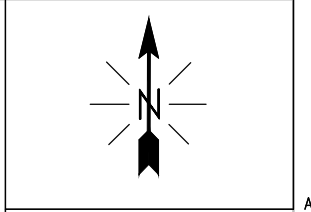
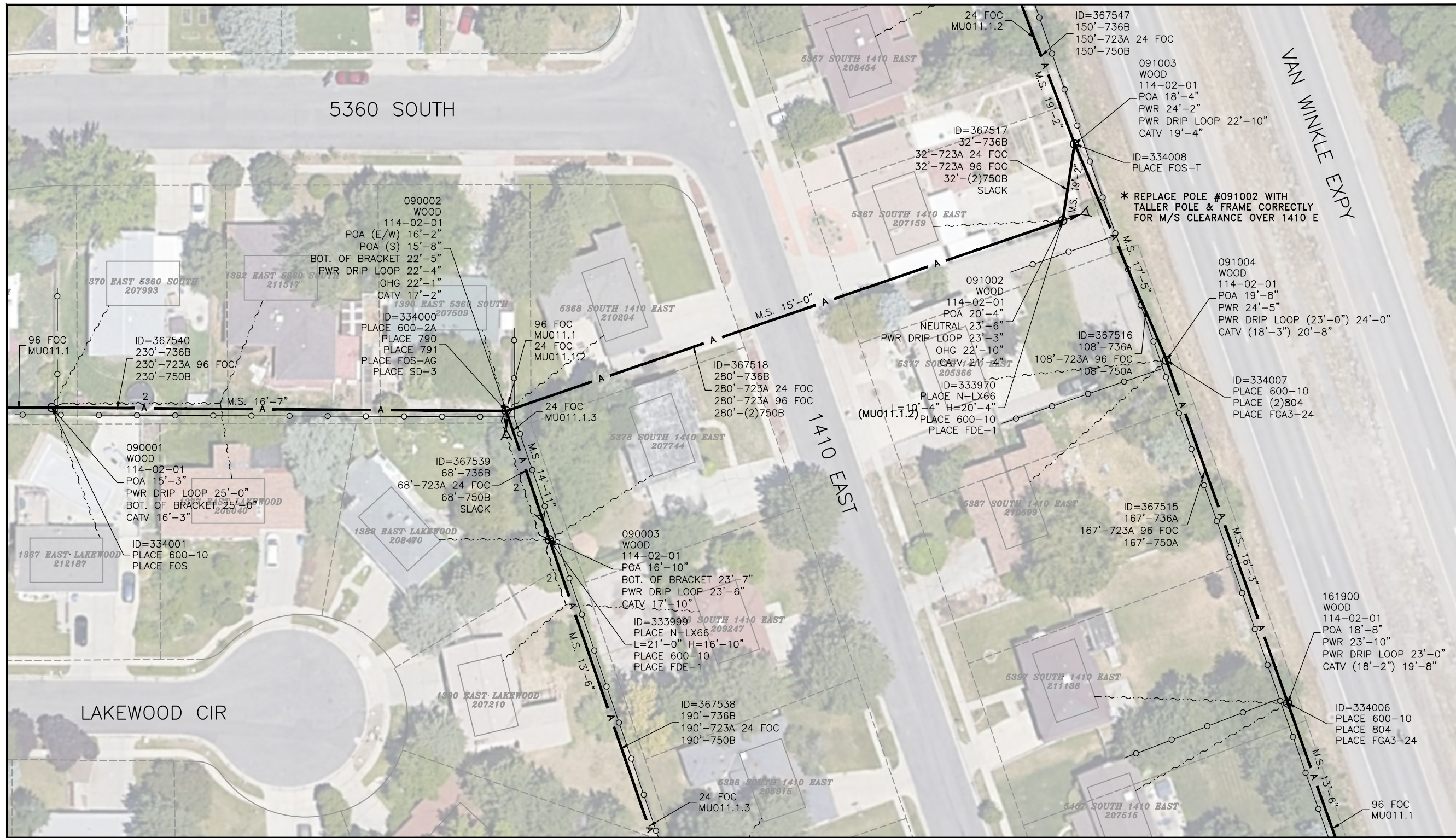
|     |     |
|-----|-----|
| 002 | 003 |
| 004 | 005 |
| 006 | 007 |



| UTOPIA           |             |         |   | JOB NUMBER     | REV  |      |
|------------------|-------------|---------|---|----------------|------|------|
| 2020 PROJECT     |             |         |   |                | 3    |      |
| MU011-001 - UTAH |             |         |   | DRAWING NUMBER |      |      |
|                  |             |         |   | MU011-004      |      |      |
| 2                | DCID'S      | 4/2021  | MSC   | MSC            | MSC  |      |
| 1                | REVIEW ONLY | 12/2020 | MSC   | MSC            | MSC  |      |
| REV              | REVISIONS   | DATE    | DRN   | CKD            | DSGN | APPD |
| DSGN             | MSC         | *       |   |                |      |      |
| DRN              | MSC         | *       |   |                |      |      |
| CKD              | MSC         | *       |   |                |      |      |
| SCALE: 1" = 50'  |             |         | THIS DRAWING WAS PREPARED BY MID-STATE CONSULTANTS, INC. FOR A SPECIFIC PROJECT, TAKING INTO CONSIDERATION THE SPECIFIC AND UNIQUE REQUIREMENTS OF THE PROJECT. REUSE OF THIS DRAWING OR ANY INFORMATION CONTAINED IN THIS DRAWING FOR ANY PURPOSE IS PROHIBITED UNLESS WRITTEN PERMISSION FROM UTAH TELECOMMUNICATIONS OPEN INFRASTRUCTURE AGENCY (UTOPIA) IS GRANTED. |                |      |      |

FILE





**NOTES:**

**LEGEND**

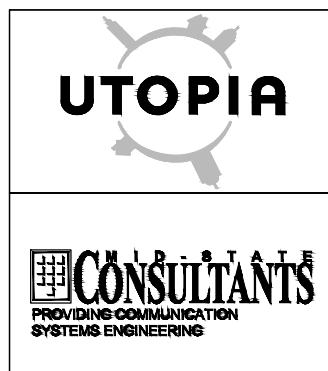
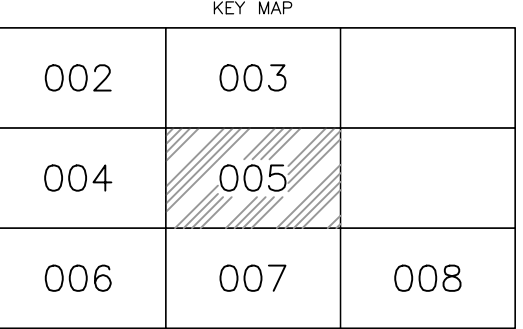
- FOOTPRINT BORDER
- STREET CENTERLINE
- PARCEL BOUNDARIES
- OVERHEAD POWER
- WATER LINE
- SEWER LINE
- RAILROAD
- EDGE OF PAVEMENT
- BACK OF CURB
- RIGHT-OF-WAY
- SIDEWALK
- DROP WIRE
- BORE
- AERIAL FIBER
- SUCCESS BASED CONDUIT
- TRENCH
- EXISTING FIBER

- THE PREFERRED CONSTRUCTION METHOD IS DIRECTIONAL BORE. THE FOLLOWING PLACEMENT WILL BE USED DURING FIELD DESIGN:
1. BACK OF CURB
  2. BACK OF SIDEWALK (WITHIN UTILITY EASEMENT)
  3. BENEATH SIDEWALK  
NOTE: CONCRETE RESTORATIONS WILL BE REQUIRED
  4. EDGE OF ROAD (ASPHALT) NOTE: ASPHALT RESTORATION WILL BE REQUIRED

CALL BEFORE DIGGING  
BLUE STAKES UTILITY  
1(800) 662-4111

| ITEM    | UNIT        | QUANTITY | DESCRIPTION   | ITEM | UNIT | QUANTITY | DESCRIPTION |
|---------|-------------|----------|---|------|------|----------|-------------|
| 600-10  | EA          | 5        | AERIAL SPLICE CLOSURE & PREP (</= 72 CNT)             |      |      |          |             |
| 600-2A  | EA          | 1        | SPLICE CLOSURE & PREP (AERIAL) (STANDARD </= 144 CNT) |      |      |          |             |
| 723A    | FT          | 720-24   | FOC   |      |      |          |             |
| 723A    | FT          | 817-96   | FOC   |      |      |          |             |
| 736A    | FT          | 275      | EXTRA HIGH STRENGTH STEEL STRAND 1/4" (RDSIDE)        |      |      |          |             |
| 736B    | FT          | 950      | EXTRA HIGH STRENGTH STEEL STRAND 1/4" (INT)           |      |      |          |             |
| (1)750A | FT-EA CABLE | 275      | DOUBLE LASH FOC TO STRAND (RDSIDE)                    |      |      |          |             |
| (1)750B | FT-EA CABLE | 638      | DOUBLE LASH FOC TO STRAND (INT)                       |      |      |          |             |
| (2)750B | FT-EA CABLE | 624      | DOUBLE LASH FOC TO STRAND (INT)                       |      |      |          |             |

| POLE   | HARDWARE            |
|--------|---------------------|
| 090001 | FOS                 |
| 090002 | 790 791 FOS-AG SD-3 |
| 090003 | FDE-1 N-LX66        |
| 091002 | FDE-1 N-LX66        |
| 091003 | FOS-T               |
| 091004 | (2)804 FGA3-24      |
| 161900 | 804 FGA3-24         |

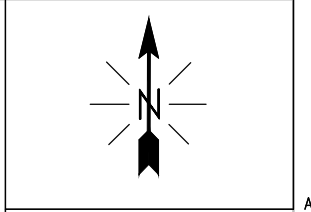


| UTopia           |             | JOB NUMBER  |     | REV       |      |      |
|------------------|-------------|---|-----|-----------|------|------|
| 2020 PROJECT     |             | MU011-001 - UTAH  |     | 3         |      |      |
| MU011-001 - UTAH |             | DRAWING NUMBER  |     | MU011-005 |      |      |
| 2                | DCID'S      | 4/2021  | MSC | MSC       | MSC  |      |
| 1                | REVIEW ONLY | 12/2020   | MSC | MSC       | MSC  |      |
| REV              | REVISIONS   | DATE  | DRN | CKD       | DSGN | APPD |
| DSGN             | MSC         | *   |     |           |      |      |
| DRN              | MSC         | *   |     |           |      |      |
| CKD              | MSC         | *   |     |           |      |      |
| SCALE: 1" = 50'  |             | THIS DRAWING WAS PREPARED BY MID-STATE CONSULTANTS, INC. FOR A SPECIFIC PROJECT, TAKING INTO CONSIDERATION THE SPECIFIC AND UNIQUE REQUIREMENTS OF THE PROJECT. REUSE OF THIS DRAWING OR ANY INFORMATION CONTAINED IN THIS DRAWING FOR ANY PURPOSE IS PROHIBITED UNLESS WRITTEN PERMISSION FROM UTAH TELECOMMUNICATIONS OPEN INFRASTRUCTURE AGENCY (UTOPIA) IS GRANTED. |     |           |      |      |









**NOTES:**

**LEGEND**

- FOOTPRINT BORDER
- STREET CENTERLINE
- PARCEL BOUNDARIES
- OHP OVERHEAD POWER
- W WATER LINE
- SS SEWER LINE
- RAILROAD
- EOP EDGE OF PAVEMENT
- BOC BACK OF CURB
- RW RIGHT-OF-WAY
- SW SIDEWALK
- DROP WIRE
- BORE BORE
- A AERIAL FIBER
- SUCCESS BASED CONDUIT
- TRENCH
- EXISTING FIBER

THE PREFERRED CONSTRUCTION METHOD IS DIRECTIONAL BORE. THE FOLLOWING PLACEMENT WILL BE USED DURING FIELD DESIGN:

1. BACK OF CURB
2. BACK OF SIDEWALK (WITHIN UTILITY EASEMENT)
3. BENEATH SIDEWALK  
NOTE: CONCRETE RESTORATIONS WILL BE REQUIRED
4. EDGE OF ROAD (ASPHALT)  
NOTE: ASPHALT RESTORATION WILL BE REQUIRED

CALL BEFORE DIGGING  
BLUE STAKES UTILITY  
1(800) 662-4111

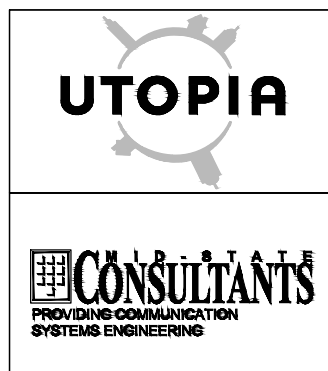
| ITEM    | UNIT        | QUANTITY   | DESCRIPTION                                    |
|---------|-------------|------------|--|
| 600-10  | EA          | 7          | AERIAL SPLICE CLOSURE & PREP ( </= 72 CNT)     |
| 723A    | FT          | 274-24 FOC | PLACE FIBER OPTIC CABLE AERIAL                 |
| 723A    | FT          | 898-96 FOC | PLACE FIBER OPTIC CABLE AERIAL                 |
| 736A    | FT          | 410        | EXTRA HIGH STRENGTH STEEL STRAND 1/4" (RDSIDE) |
| 736B    | FT          | 762        | EXTRA HIGH STRENGTH STEEL STRAND 1/4" (INT)    |
| (1)750A | FT-EA CABLE | 410        | DOUBLE LASH FOC TO STRAND (RDSIDE)             |
| (1)750B | FT-EA CABLE | 762        | DOUBLE LASH FOC TO STRAND (INT)                |

| ITEM | UNIT | QUANTITY | DESCRIPTION |
|------|------|----------|-------------|
|      |      |          |             |
|      |      |          |             |
|      |      |          |             |
|      |      |          |             |
|      |      |          |             |
|      |      |          |             |

| POLE                    | HARDWARE |
|-------------------------|----------|
| 160901 FOS              |          |
| 160902 FOS              |          |
| 160903 791 FDE-1 N-LX66 |          |
| 160904 791 FDE-1 N-LX66 |          |
| 160905 791 N-LX66 SD-4  |          |
| 160906 791 N-LX66 SD-4  |          |
| 161901 804 FOS          |          |
| 161904 FOS              |          |
| 161905 FOS              |          |

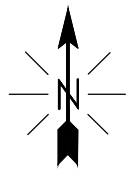
KEY MAP

|     |     |     |
|-----|-----|-----|
| 004 | 005 |     |
| 006 | 007 | 008 |
| 010 | 011 | 012 |



| UTOPIA           |             |         |   | JOB NUMBER                  | REV  |      |
|------------------|-------------|---------|---|-----------------------------|------|------|
| 2020 PROJECT     |             |         |   |                             | 3    |      |
| MU011-001 - UTAH |             |         |   | DRAWING NUMBER<br>MU011-007 |      |      |
| 2                | DCID'S      | 4/2021  | MSC   | MSC                         | MSC  |      |
| 1                | REVIEW ONLY | 12/2020 | MSC   | MSC                         | MSC  |      |
| REV              | REVISIONS   | DATE    | DRN   | CKD                         | DSGN | APPD |
| DSGN             | MSC         | *       |   |                             |      |      |
| DRN              | MSC         | *       |   |                             |      |      |
| CKD              | MSC         | *       |   |                             |      |      |
| SCALE: 1" = 50'  |             |         | THIS DRAWING WAS PREPARED BY MID-STATE CONSULTANTS, INC. FOR A SPECIFIC PROJECT, TAKING INTO CONSIDERATION THE SPECIFIC AND UNIQUE REQUIREMENTS OF THE PROJECT. REUSE OF THIS DRAWING OR ANY INFORMATION CONTAINED IN THIS DRAWING FOR ANY PURPOSE IS PROHIBITED UNLESS WRITTEN PERMISSION FROM UTAH TELECOMMUNICATIONS OPEN INFRASTRUCTURE AGENCY (UTOPIA) IS GRANTED. |                             |      |      |





NOTES:

| LEGEND |                       |
|--------|-----------------------|
|        | FOOTPRINT BORDER      |
|        | STREET CENTERLINE     |
|        | PARCEL BOUNDARIES     |
|        | OVERHEAD POWER        |
|        | WATER LINE            |
|        | SEWER LINE            |
|        | RAILROAD              |
|        | EDGE OF PAVEMENT      |
|        | BACK OF CURB          |
|        | RIGHT-OF-WAY          |
|        | SIDEWALK              |
|        | DROP WIRE             |
|        | BORE                  |
|        | AERIAL FIBER          |
|        | SUCCESS BASED CONDUIT |
|        | TRENCH                |
|        | EXISTING FIBER        |

- THE PREFERRED CONSTRUCTION METHOD IS DIRECTIONAL BORE. THE FOLLOWING PLACEMENT WILL BE USED DURING FIELD DESIGN:
1. BACK OF CURB
  2. BACK OF SIDEWALK (WITHIN UTILITY EASEMENT)
  3. BENEATH SIDEWALK  
NOTE: CONCRETE RESTORATIONS WILL BE REQUIRED
  4. EDGE OF ROAD (ASPHALT) NOTE: ASPHALT RESTORATION WILL BE REQUIRED

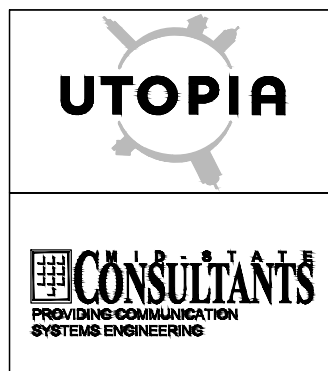
CALL BEFORE DIGGING  
BLUE STAKES UTILITY  
1(800) 662-4111

| ITEM    | UNIT        | QUANTITY  | DESCRIPTION  | ITEM | UNIT | QUANTITY | DESCRIPTION |
|---------|-------------|-----------|--|------|------|----------|-------------|
| 321R    | FT-EA CABLE | 22-24 FOC | PL. IN CONDUIT/CASING RISER - (< OR = 96 FOC)        |      |      |          |             |
| 600-2A  | EA          | 1         | SPLICE CLOSURE & PREP (AERIAL) (STANDARD <= 144 CNT) |      |      |          |             |
| 723A    | FT          | 32-96 FOC | PLACE FIBER OPTIC CABLE AERIAL                       |      |      |          |             |
| 736B    | FT          | 32        | EXTRA HIGH STRENGTH STEEL STRAND 1/4" (INT)          |      |      |          |             |
| (1)750B | FT-EA CABLE | 32        | DOUBLE LASH FOC TO STRAND (INT)                      |      |      |          |             |

| POLE   | HARDWARE |        |        |     |
|--------|----------|--------|--------|-----|
| 161902 | 720-2    | 791    | 800    | 804 |
|        | FDE-1    | N-LX16 |        |     |
| 161903 | 791      | FDE-1  | N-LX16 |     |

KEY MAP

|     |     |  |
|-----|-----|--|
| 005 |     |  |
| 007 | 008 |  |
| 011 | 012 |  |



| UTOPIA           |             | JOB NUMBER     |     | REV       |      |      |
|------------------|-------------|----------------|-----|-----------|------|------|
| 2020 PROJECT     |             |                |     | 3         |      |      |
| MU011-001 - UTAH |             | DRAWING NUMBER |     | MU011-008 |      |      |
| 2                | DCID'S      | 4/2021         | MSC | MSC       | MSC  |      |
| 1                | REVIEW ONLY | 12/2020        | MSC | MSC       | MSC  |      |
| REV              | REVISIONS   | DATE           | DRN | CKD       | DSGN | APPD |
| DSGN             | MSC         | *              |     |           |      |      |
| DRN              | MSC         | *              |     |           |      |      |
| CKD              | MSC         | *              |     |           |      |      |
| SCALE:           |             | 1" = 50'       |     |           |      |      |

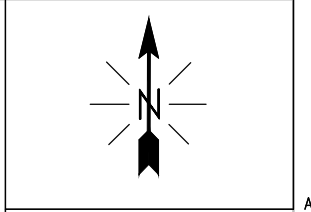
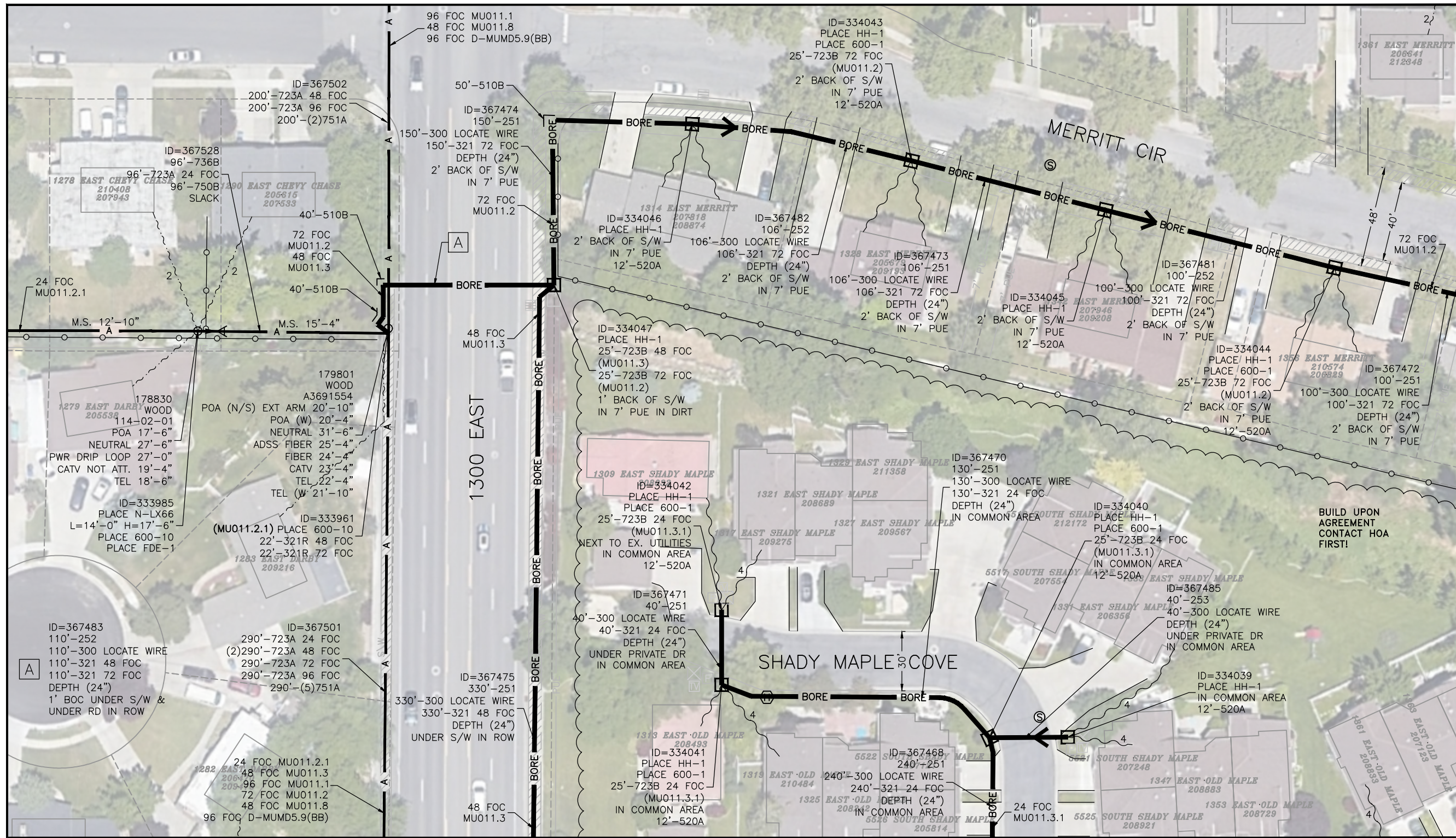
THIS DRAWING WAS PREPARED BY MID-STATE CONSULTANTS, INC. FOR A SPECIFIC PROJECT, TAKING INTO CONSIDERATION THE SPECIFIC AND UNIQUE REQUIREMENTS OF THE PROJECT. REUSE OF THIS DRAWING OR ANY INFORMATION CONTAINED IN THIS DRAWING FOR ANY PURPOSE IS PROHIBITED UNLESS WRITTEN PERMISSION FROM UTAH TELECOMMUNICATIONS OPEN INFRASTRUCTURE AGENCY (UTOPIA) IS GRANTED.

FILE









NOTES:

**LEGEND**

- FOOTPRINT BORDER
- STREET CENTERLINE
- PARCEL BOUNDARIES
- OHP OVERHEAD POWER
- W WATER LINE
- SS SEWER LINE
- RAILROAD
- EOP EDGE OF PAVEMENT
- BOC BACK OF CURB
- RW RIGHT-OF-WAY
- SW SIDEWALK
- DROP WIRE
- BORE
- AERIAL FIBER
- SUCCESS BASED CONDUIT
- TRENCH
- EXISTING FIBER

THE PREFERRED CONSTRUCTION METHOD IS DIRECTIONAL BORE. THE FOLLOWING PLACEMENT WILL BE USED DURING FIELD DESIGN:

1. BACK OF CURB
2. BACK OF SIDEWALK (WITHIN UTILITY EASEMENT)
3. BENEATH SIDEWALK  
NOTE: CONCRETE RESTORATIONS WILL BE REQUIRED
4. EDGE OF ROAD (ASPHALT) NOTE: ASPHALT RESTORATION WILL BE REQUIRED

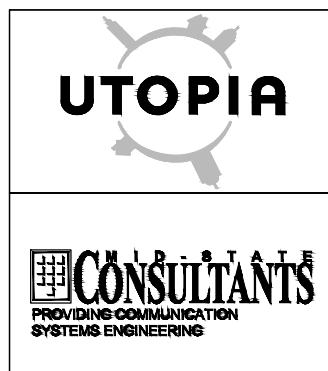
CALL BEFORE DIGGING  
BLUE STAKES UTILITY  
1(800) 662-4111

| ITEM   | UNIT        | QUANTITY   | DESCRIPTION                                    | ITEM    | UNIT        | QUANTITY   | DESCRIPTION  |
|--------|-------------|------------|--|---------|-------------|------------|--|
| 251    | FT          | 1096       | DIR. BORE 1-1 1/4" OR 2" HDPE (24" DEPTH)      | 723A    | FT          | 96-24 FOC  | PLACE FIBER OPTIC CABLE AERIAL                     |
| 252    | FT          | 316        | DIR. BORE 2-1 1/4" OR 2" HDPE (24" DEPTH)      | 723A    | FT          | 200-48 FOC | PLACE FIBER OPTIC CABLE AERIAL                     |
| 253    | FT          | 40         | DIR. BORE 3-1 1/4" OR 2" HDPE (24" DEPTH)      | 723A    | FT          | 200-96 FOC | PLACE FIBER OPTIC CABLE AERIAL                     |
| 300    | FT          | 1452       | PL. IN CONDUIT - 1 LOCATE WIRE                 | 723B    | FT-EA CABLE | 75-24 FOC  | FIBER OPTIC SLACK STORAGE CABLE IN HH FP OR AERIAL |
| 321    | FT          | 410-24 FOC | PL. IN CONDUIT - (< /= 96 FOC)                 | 723B    | FT-EA CABLE | 25-48 FOC  | FIBER OPTIC SLACK STORAGE CABLE IN HH FP OR AERIAL |
| 321    | FT          | 440-48 FOC | PL. IN CONDUIT - (< /= 96 FOC)                 | 723B    | FT-EA CABLE | 75-72 FOC  | FIBER OPTIC SLACK STORAGE CABLE IN HH FP OR AERIAL |
| 321    | FT          | 672-72 FOC | PL. IN CONDUIT - (< /= 96 FOC)                 | 736B    | FT          | 96         | EXTRA HIGH STRENGTH STEEL STRAND 1/4" (INT)        |
| 321R   | FT-EA CABLE | 22-48 FOC  | PL. IN CONDUIT/CASING RISER - (< OR = 96 FOC)  | (1)750B | FT-EA CABLE | 96         | DOUBLE LASH FOC TO STRAND (INT)                    |
| 321R   | FT-EA CABLE | 22-72 FOC  | PL. IN CONDUIT/CASING RISER - (< OR = 96 FOC)  | (2)751A | FT          | 400        | OVERLASH FIBER OPTIC CABLE (RDSIDE)                |
| 510B   | SQFT        | 130        | CONC R&R RD UP TO 4" DEPTH AT TRENCH/BORE PITS | HH-1    | EA          | 9          | HANDHOLE (SMALL < 24")                             |
| 520A   | SQFT        | 96         | SOD R&R - AT & AROUND HH ONLY                  |         |             |            |  |
| 600-1  | EA          | 5          | SPL. CLOSURE & PREP (SM DROP CASE < 72 CNT)    |         |             |            |  |
| 600-10 | EA          | 2          | AERIAL SPLICE CLOSURE & PREP (< /= 72 CNT)     |         |             |            |  |

| POLE   | HARDWARE     |
|--------|--------------|
| 178830 | FDE-1 N-LX66 |

KEY MAP

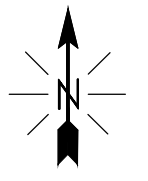
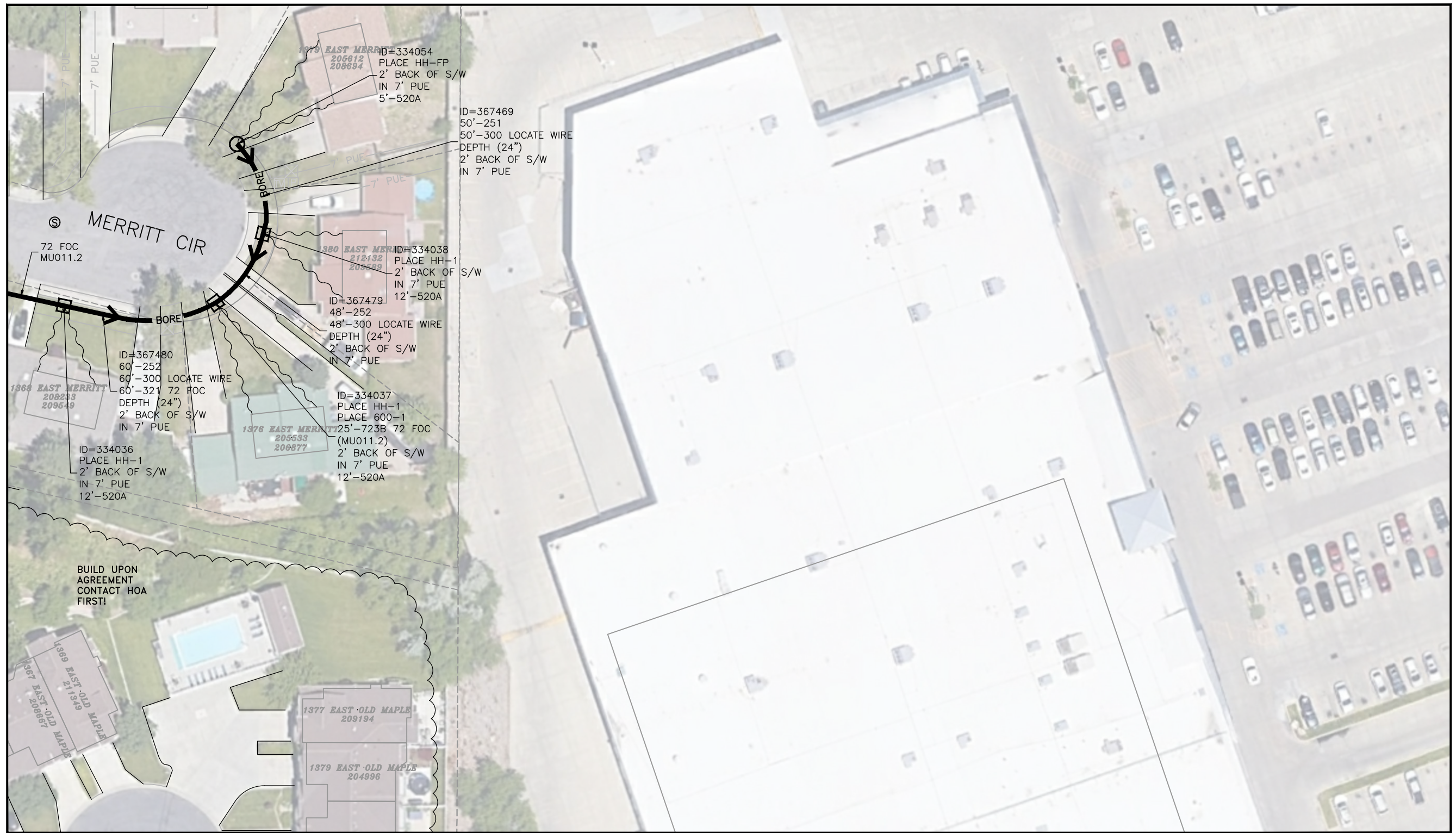
|     |     |
|-----|-----|
| 006 | 007 |
| 009 | 010 |
| 013 | 014 |
|     | 015 |



| UTOPIA           |             |         |     | JOB NUMBER     | REV  |
|------------------|-------------|---------|-----|----------------|------|
| 2020 PROJECT     |             |         |     |                | 3    |
| MU011-001 - UTAH |             |         |     | DRAWING NUMBER |      |
|                  |             |         |     | MU011-010      |      |
| 2                | DCID'S      | 4/2021  | MSC | MSC            | MSC  |
| 1                | REVIEW ONLY | 12/2020 | MSC | CKD            | MSC  |
| REV              | REVISIONS   | DATE    | DRN | MSK            | APPD |
| DSGN             | MSC         | *       |     |                |      |
| DRN              | MSC         | *       |     |                |      |
| CKD              | MSC         | *       |     |                |      |
| SCALE: 1" = 50'  |             |         |     |                |      |

THIS DRAWING WAS PREPARED BY MID-STATE CONSULTANTS, INC. FOR A SPECIFIC PROJECT, TAKING INTO CONSIDERATION THE SPECIFIC AND UNIQUE REQUIREMENTS OF THE PROJECT. REUSE OF THIS DRAWING OR ANY INFORMATION CONTAINED IN THIS DRAWING FOR ANY PURPOSE IS PROHIBITED UNLESS WRITTEN PERMISSION FROM UTAH TELECOMMUNICATIONS OPEN INFRASTRUCTURE AGENCY (UTOPIA) IS GRANTED.





**NOTES:**

**LEGEND**

- FOOTPRINT BORDER
- STREET CENTERLINE
- PARCEL BOUNDARIES
- OHP OVERHEAD POWER
- W WATER LINE
- SS SEWER LINE
- RAILROAD
- EOP EDGE OF PAVEMENT
- BOC BACK OF CURB
- RW RIGHT-OF-WAY
- SW SIDEWALK
- DROP WIRE
- BORE
- A AERIAL FIBER
- SUCCESS BASED CONDUIT
- TRENCH
- EXISTING FIBER

- THE PREFERRED CONSTRUCTION METHOD IS DIRECTIONAL BORE. THE FOLLOWING PLACEMENT WILL BE USED DURING FIELD DESIGN:
1. BACK OF CURB
  2. BACK OF SIDEWALK (WITHIN UTILITY EASEMENT)
  3. BENEATH SIDEWALK  
NOTE: CONCRETE RESTORATIONS WILL BE REQUIRED
  4. EDGE OF ROAD (ASPHALT) NOTE: ASPHALT RESTORATION WILL BE REQUIRED

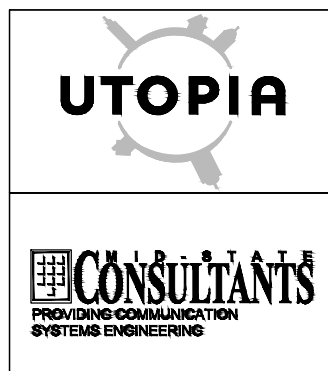
CALL BEFORE DIGGING  
BLUE STAKES UTILITY  
1(800) 662-4111

| ITEM  | UNIT        | QUANTITY  | DESCRIPTION                                 | ITEM | UNIT | QUANTITY | DESCRIPTION |
|-------|-------------|-----------|---|------|------|----------|-------------|
| 251   | FT          | 50        | DIR. BORE 1-1 1/4" OR 2" HDPE (24" DEPTH)   |      |      |          |             |
| 252   | FT          | 108       | DIR. BORE 2-1 1/4" OR 2" HDPE (24" DEPTH)   |      |      |          |             |
| 300   | FT          | 158       | PL. IN CONDUIT - 1 LOCATE WIRE              |      |      |          |             |
| 321   | FT          | 60-72 FOC | PL. IN CONDUIT - ( </= 96 FOC)              |      |      |          |             |
| 520A  | SQFT        | 41        | SOD R&R - AT & AROUND HH ONLY               |      |      |          |             |
| 600-1 | EA          | 1         | SPL. CLOSURE & PREP (SM DROP CASE < 72 CNT) |      |      |          |             |
| 723B  | FT-EA CABLE | 25-72 FOC | FIBER OPTIC SLACK STORAGE CABLE IN HH OR FP |      |      |          |             |
| HH-1  | EA          | 3         | HANDHOLE (SMALL < 24")                      |      |      |          |             |
| HH-FP | EA          | 1         | HANDHOLE (FLOWER POT - ONLY)                |      |      |          |             |

| POLE | HARDWARE |
|------|----------|
|      |          |
|      |          |
|      |          |
|      |          |
|      |          |
|      |          |
|      |          |
|      |          |
|      |          |

KEY MAP

|     |     |     |
|-----|-----|-----|
| 006 | 007 | 008 |
| 010 | 011 | 012 |
| 014 | 015 | 016 |



| UTOPIA           |             | JOB NUMBER     |     | REV       |      |      |
|------------------|-------------|----------------|-----|-----------|------|------|
| 2020 PROJECT     |             |                |     | 3         |      |      |
| MU011-001 - UTAH |             | DRAWING NUMBER |     | MU011-011 |      |      |
| 2                | DCID'S      | 4/2021         | MSC | MSC       | MSC  |      |
| 1                | REVIEW ONLY | 12/2020        | MSC | MSC       | MSC  |      |
| REV              | REVISIONS   | DATE           | DRN | CKD       | DSGN | APPD |
| DSGN             | MSC         | *              |     |           |      |      |
| DRN              | MSC         | *              |     |           |      |      |
| CKD              | MSC         | *              |     |           |      |      |
| SCALE:           |             | 1" = 50'       |     |           |      |      |

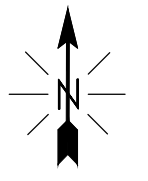
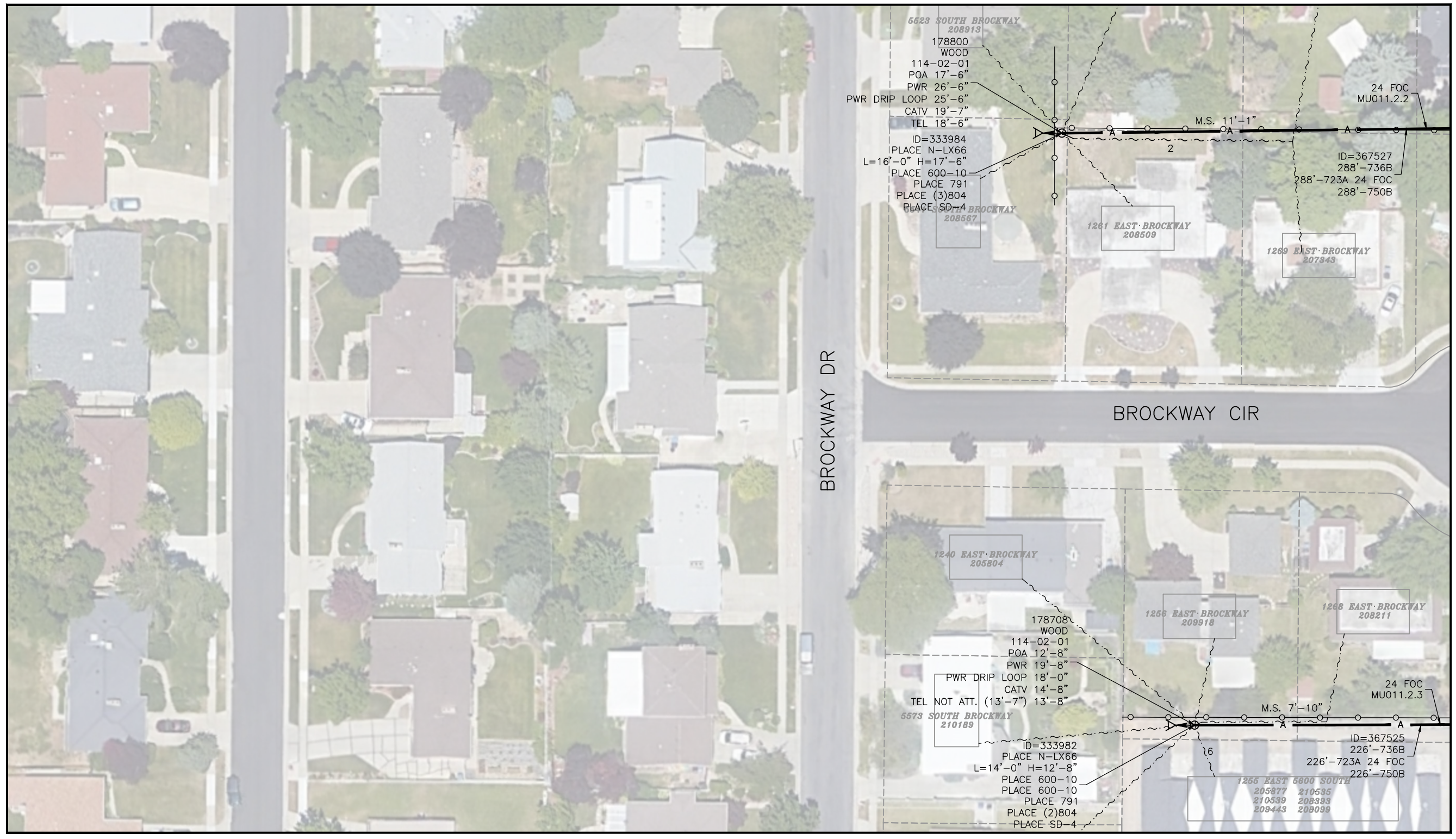
THIS DRAWING WAS PREPARED BY MID-STATE CONSULTANTS, INC. FOR A SPECIFIC PROJECT, TAKING INTO CONSIDERATION THE SPECIFIC AND UNIQUE REQUIREMENTS OF THE PROJECT. REUSE OF THIS DRAWING OR ANY INFORMATION CONTAINED IN THIS DRAWING FOR ANY PURPOSE IS PROHIBITED UNLESS WRITTEN PERMISSION FROM UTAH TELECOMMUNICATIONS OPEN INFRASTRUCTURE AGENCY (UTOPIA) IS GRANTED.

FILE









NOTES:

| LEGEND |                       |
|--------|-----------------------|
|        | FOOTPRINT BORDER      |
|        | STREET CENTERLINE     |
|        | PARCEL BOUNDARIES     |
|        | OVERHEAD POWER        |
|        | WATER LINE            |
|        | SEWER LINE            |
|        | RAILROAD              |
|        | EDGE OF PAVEMENT      |
|        | BACK OF CURB          |
|        | RIGHT-OF-WAY          |
|        | SIDEWALK              |
|        | DROP WIRE             |
|        | BORE BORE             |
|        | AERIAL FIBER          |
|        | SUCCESS BASED CONDUIT |
|        | TRENCH                |
|        | EXISTING FIBER        |

THE PREFERRED CONSTRUCTION METHOD IS DIRECTIONAL BORE. THE FOLLOWING PLACEMENT WILL BE USED DURING FIELD DESIGN:

1. BACK OF CURB
2. BACK OF SIDEWALK (WITHIN UTILITY EASEMENT)
3. BENEATH SIDEWALK  
NOTE: CONCRETE RESTORATIONS WILL BE REQUIRED
4. EDGE OF ROAD (ASPHALT) NOTE: ASPHALT RESTORATION WILL BE REQUIRED

CALL BEFORE DIGGING  
BLUE STAKES UTILITY  
1(800) 662-4111

| ITEM    | UNIT        | QUANTITY | DESCRIPTION                                 | ITEM                           | UNIT | QUANTITY | DESCRIPTION |
|---------|-------------|----------|---|--------------------------------|------|----------|-------------|
| 600-10  | EA          | 3        | AERIAL SPLICE CLOSURE & PREP ( </= 72 CNT)  |                                |      |          |             |
| 723A    | FT          | 514-24   | FOC   | PLACE FIBER OPTIC CABLE AERIAL |      |          |             |
| 736B    | FT          | 514      | EXTRA HIGH STRENGTH STEEL STRAND 1/4" (INT) |                                |      |          |             |
| (1)750B | FT-EA CABLE | 514      | DOUBLE LASH FOC TO STRAND (INT)             |                                |      |          |             |

| POLE   | HARDWARE |     |        |      |
|--------|----------|-----|--------|------|
| 178708 | (2)804   | 791 | N-LX66 | SD-4 |
| 178800 | (3)804   | 791 | N-LX66 | SD-4 |

KEY MAP

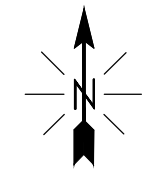
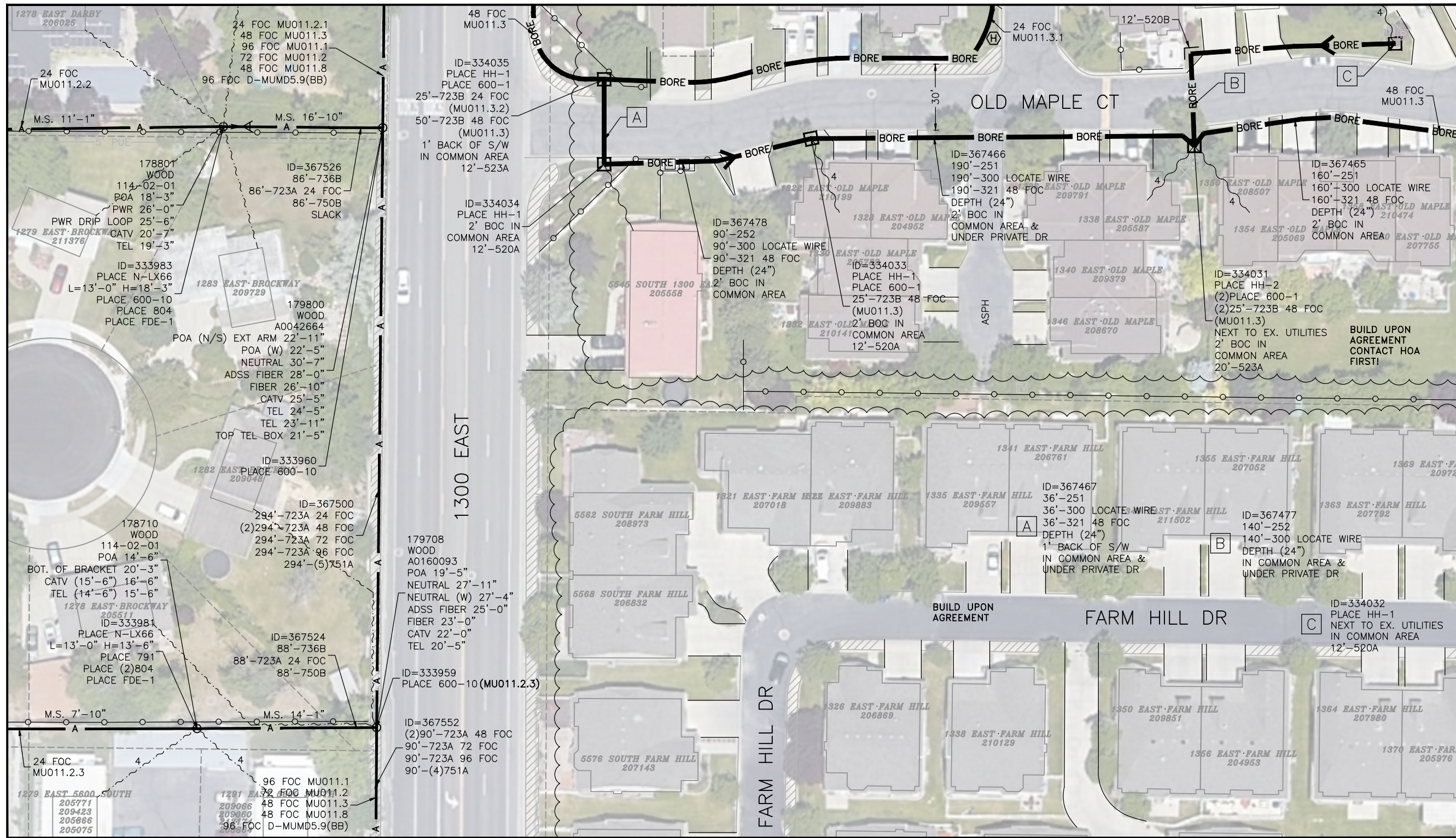
|     |     |
|-----|-----|
| 009 | 010 |
| 013 | 014 |
| 017 | 018 |

**UTOPIA**

**MID-STATE CONSULTANTS**  
PROVIDING COMMUNICATION SYSTEMS ENGINEERING

| UTOPIA           |             |         |   | JOB NUMBER     | REV  |      |
|------------------|-------------|---------|---|----------------|------|------|
| 2020 PROJECT     |             |         |   | 3              |      |      |
| MU011-001 - UTAH |             |         |   | DRAWING NUMBER |      |      |
|                  |             |         |   | MU011-013      |      |      |
| 2                | DCID'S      | 4/2021  | MSC   | MSC            | MSC  |      |
| 1                | REVIEW ONLY | 12/2020 | MSC   | MSC            | MSC  |      |
| REV              | REVISIONS   | DATE    | DRN   | CKD            | DSGN | APPD |
| DSGN             | MSC         | *       |   |                |      |      |
| DRN              | MSC         | *       |   |                |      |      |
| CKD              | MSC         | *       |   |                |      |      |
| SCALE: 1" = 50'  |             |         | THIS DRAWING WAS PREPARED BY MID-STATE CONSULTANTS, INC. FOR A SPECIFIC PROJECT, TAKING INTO CONSIDERATION THE SPECIFIC AND UNIQUE REQUIREMENTS OF THE PROJECT. REUSE OF THIS DRAWING OR ANY INFORMATION CONTAINED IN THIS DRAWING FOR ANY PURPOSE IS PROHIBITED UNLESS WRITTEN PERMISSION FROM UTAH TELECOMMUNICATIONS OPEN INFRASTRUCTURE AGENCY (UTOPIA) IS GRANTED. |                |      |      |





**NOTES:**

**LEGEND**

- FOOTPRINT BORDER
- STREET CENTERLINE
- PARCEL BOUNDARIES
- OHP OVERHEAD POWER
- W WATER LINE
- SS SEWER LINE
- RAILROAD
- EOP EDGE OF PAVEMENT
- BOC BACK OF CURB
- RW RIGHT-OF-WAY
- SW SIDEWALK
- DROP WIRE
- BORE
- A AERIAL FIBER
- SUCCESS BASED CONDUIT
- TRENCH
- EXISTING FIBER

- THE PREFERRED CONSTRUCTION METHOD IS DIRECTIONAL BORE. THE FOLLOWING PLACEMENT WILL BE USED DURING FIELD DESIGN:
1. BACK OF CURB
  2. BACK OF SIDEWALK (WITHIN UTILITY EASEMENT)
  3. BENEATH SIDEWALK NOTE: CONCRETE RESTORATIONS WILL BE REQUIRED
  4. EDGE OF ROAD (ASPHALT) NOTE: ASPHALT RESTORATION WILL BE REQUIRED

CALL BEFORE DIGGING  
 BLUE STAKES UTILITY  
 1(800) 662-4111

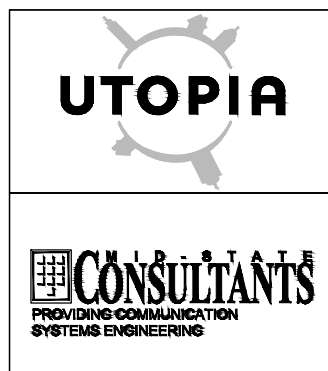
| ITEM   | UNIT | QUANTITY   | DESCRIPTION                                 |
|--------|------|------------|---|
| 251    | FT   | 386        | DIR. BORE 1-1 1/4" OR 2" HDPE (24" DEPTH)   |
| 252    | FT   | 230        | DIR. BORE 2-1 1/4" OR 2" HDPE (24" DEPTH)   |
| 300    | FT   | 616        | PL. IN CONDUIT - 1 LOCATE WIRE              |
| 321    | FT   | 476-48 FOC | PL. IN CONDUIT - (</= 96 FOC)               |
| 520A   | SQFT | 36         | SOD R&R - AT & AROUND HH ONLY               |
| 520B   | SQFT | 12         | SOD R&R - AT TRENCH/BORE PITS               |
| 523A   | SQFT | 32         | DECORATIVE BARK R&R - AT & AROUND HH ONLY   |
| 600-1  | EA   | 4          | SPL. CLOSURE & PREP (SM DROP CASE < 72 CNT) |
| 600-10 | EA   | 3          | AERIAL SPLICE CLOSURE & PREP (</= 72 CNT)   |
| 723A   | FT   | 468-24 FOC | PLACE FIBER OPTIC CABLE AERIAL              |
| 723A   | FT   | 768-48 FOC | PLACE FIBER OPTIC CABLE AERIAL              |
| 723A   | FT   | 384-72 FOC | PLACE FIBER OPTIC CABLE AERIAL              |
| 723A   | FT   | 384-96 FOC | PLACE FIBER OPTIC CABLE AERIAL              |

| ITEM    | UNIT        | QUANTITY   | DESCRIPTION  |
|---------|-------------|------------|--|
| 723B    | FT-EA CABLE | 25-24 FOC  | FIBER OPTIC SLACK STORAGE CABLE IN HH FP OR AERIAL |
| 723B    | FT-EA CABLE | 125-48 FOC | FIBER OPTIC SLACK STORAGE CABLE IN HH FP OR AERIAL |
| 736B    | FT          | 174        | EXTRA HIGH STRENGTH STEEL STRAND 1/4" (INT)        |
| (1)750B | FT-EA CABLE | 174        | DOUBLE LASH FOC TO STRAND (INT)                    |
| (4)751A | FT          | 360        | OVERLASH FIBER OPTIC CABLE (RDSIDE)                |
| (5)751A | FT          | 1470       | OVERLASH FIBER OPTIC CABLE (RDSIDE)                |
| HH-1    | EA          | 4          | HANDHOLE (SMALL < 24")                             |
| HH-2    | EA          | 1          | HANDHOLE (MEDIUM < 36")                            |

| POLE   | HARDWARE                |
|--------|-------------------------|
| 178710 | (2)804 791 FDE-1 N-LX66 |
| 178801 | 804 FDE-1 N-LX66        |

KEY MAP

|     |     |     |
|-----|-----|-----|
| 009 | 010 | 011 |
| 013 | 014 | 015 |
| 017 | 018 | 019 |



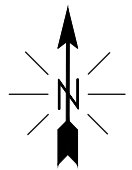
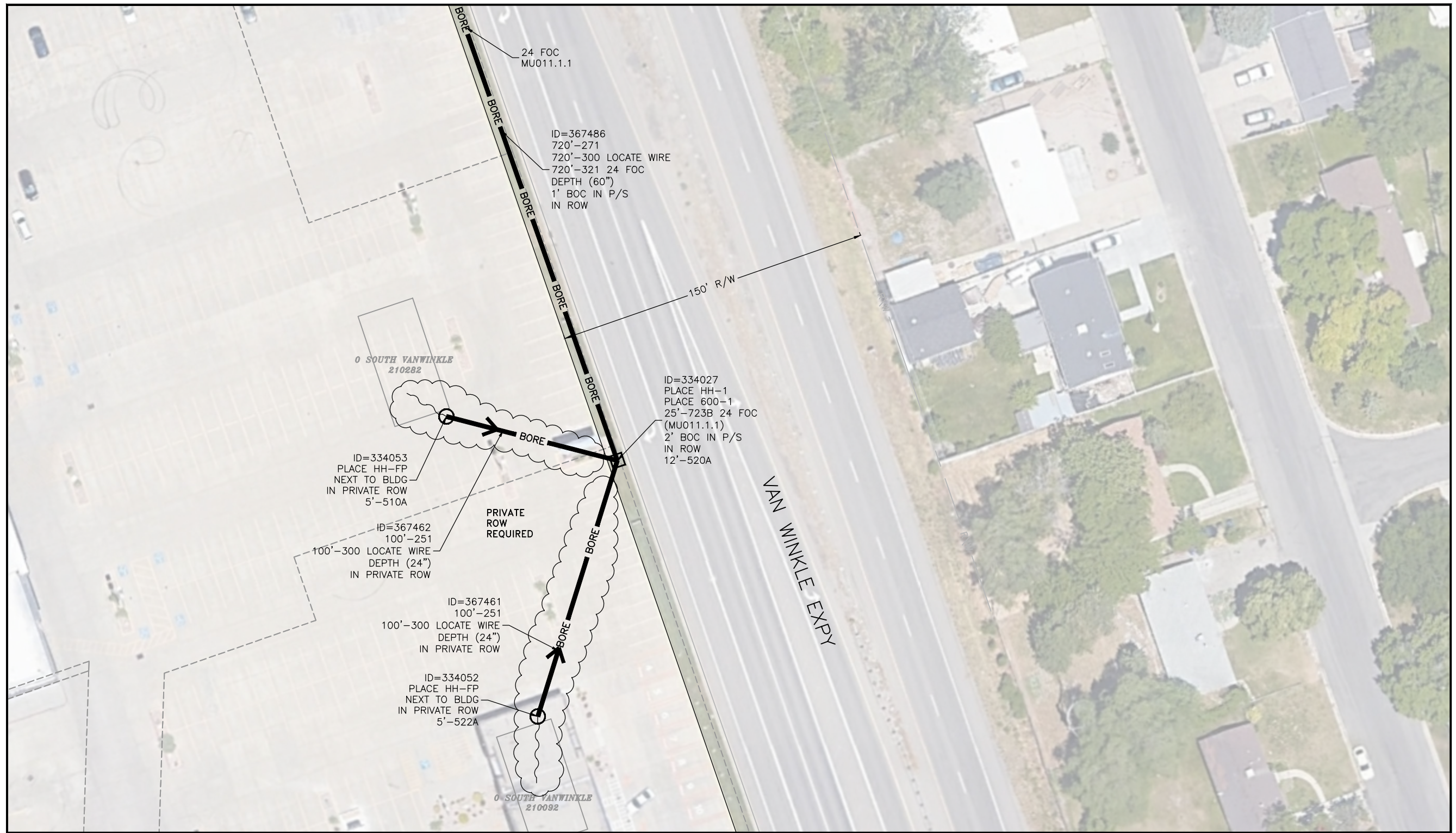
| UTOPIA           |             |         |     | JOB NUMBER     | REV  |      |
|------------------|-------------|---------|-----|----------------|------|------|
| 2020 PROJECT     |             |         |     |                | 3    |      |
| MU011-001 - UTAH |             |         |     | DRAWING NUMBER |      |      |
|                  |             |         |     | MU011-014      |      |      |
| 2                | DCID'S      | 4/2021  | MSC | MSC            | MSC  |      |
| 1                | REVIEW ONLY | 12/2020 | MSC | MSC            | MSC  |      |
| REV              | REVISIONS   | DATE    | DRN | CKD            | DSGN | APPD |
| DSGN             | MSC         | *       |     |                |      |      |
| DRN              | MSC         | *       |     |                |      |      |
| CKD              | MSC         | *       |     |                |      |      |
| SCALE: 1" = 50'  |             |         |     |                |      |      |

THIS DRAWING WAS PREPARED BY MID-STATE CONSULTANTS, INC. FOR A SPECIFIC PROJECT, TAKING INTO CONSIDERATION THE SPECIFIC AND UNIQUE REQUIREMENTS OF THE PROJECT. REUSE OF THIS DRAWING OR ANY INFORMATION CONTAINED IN THIS DRAWING FOR ANY PURPOSE IS PROHIBITED UNLESS WRITTEN PERMISSION FROM UTAH TELECOMMUNICATIONS OPEN INFRASTRUCTURE AGENCY (UTOPIA) IS GRANTED.









NOTES:

| LEGEND |                       |
|--------|-----------------------|
|        | FOOTPRINT BORDER      |
|        | STREET CENTERLINE     |
|        | PARCEL BOUNDARIES     |
|        | OVERHEAD POWER        |
|        | WATER LINE            |
|        | SEWER LINE            |
|        | RAILROAD              |
|        | EDGE OF PAVEMENT      |
|        | BACK OF CURB          |
|        | RIGHT-OF-WAY          |
|        | SIDEWALK              |
|        | DROP WIRE             |
|        | BORE                  |
|        | AERIAL FIBER          |
|        | SUCCESS BASED CONDUIT |
|        | TRENCH                |
|        | EXISTING FIBER        |

THE PREFERRED CONSTRUCTION METHOD IS DIRECTIONAL BORE. THE FOLLOWING PLACEMENT WILL BE USED DURING FIELD DESIGN:

1. BACK OF CURB
2. BACK OF SIDEWALK (WITHIN UTILITY EASEMENT)
3. BENEATH SIDEWALK  
NOTE: CONCRETE RESTORATIONS WILL BE REQUIRED
4. EDGE OF ROAD (ASPHALT) NOTE: ASPHALT RESTORATION WILL BE REQUIRED

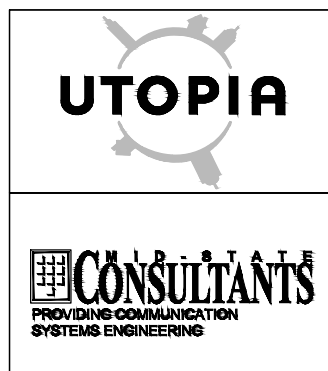
CALL BEFORE DIGGING  
BLUE STAKES UTILITY  
1(800) 662-4111

| ITEM  | UNIT        | QUANTITY   | DESCRIPTION                                 | ITEM | UNIT | QUANTITY | DESCRIPTION |
|-------|-------------|------------|---|------|------|----------|-------------|
| 251   | FT          | 200        | DIR. BORE 1-1 1/4" OR 2" HDPE (24" DEPTH)   |      |      |          |             |
| 271   | FT          | 720        | DIR. BORE 1-1 1/4" OR 2" HDPE (60" DEPTH)   |      |      |          |             |
| 300   | FT          | 920        | PL. IN CONDUIT - 1 LOCATE WIRE              |      |      |          |             |
| 321   | FT          | 720-24 FOC | PL. IN CONDUIT - ( </= 96 FOC)              |      |      |          |             |
| 510A  | SQFT        | 5          | CONC R&R UP TO 4" DEPTH AT & AROUND HH ONLY |      |      |          |             |
| 520A  | SQFT        | 12         | SOD R&R - AT & AROUND HH ONLY               |      |      |          |             |
| 522A  | SQFT        | 5          | DECORATIVE ROCK R&R - AT & AROUND HH ONLY   |      |      |          |             |
| 600-1 | EA          | 1          | SPL. CLOSURE & PREP (SM DROP CASE < 72 CNT) |      |      |          |             |
| 723B  | FT-EA CABLE | 25-24 FOC  | FIBER OPTIC SLACK STORAGE CABLE IN HH OR FP |      |      |          |             |
| HH-1  | EA          | 1          | HANDHOLE (SMALL < 24")                      |      |      |          |             |
| HH-FP | EA          | 2          | HANDHOLE (FLOWER POT - ONLY)                |      |      |          |             |

| POLE | HARDWARE |
|------|----------|
|      |          |
|      |          |
|      |          |
|      |          |
|      |          |
|      |          |
|      |          |
|      |          |
|      |          |

KEY MAP

|     |     |  |
|-----|-----|--|
| 011 | 012 |  |
| 015 | 016 |  |
| 019 | 020 |  |



| UTOPIA           |             | JOB NUMBER  |     | REV |
|------------------|-------------|---|-----|-----|
| 2020 PROJECT     |             |   |     | 3   |
| MU011-001 - UTAH |             | DRAWING NUMBER  |     |     |
|                  |             | MU011-016   |     |     |
| 2                | DCID'S      | 4/2021  | MSC | MSC |
| 1                | REVIEW ONLY | 12/2020   | MSC | MSC |
| REV              | REVISIONS   | DATE  | DRN | CKD |
| DSGN             | MSC         | *   |     |     |
| DRN              | MSC         | *   |     |     |
| CKD              | MSC         | *   |     |     |
| SCALE: 1" = 50'  |             | THIS DRAWING WAS PREPARED BY MID-STATE CONSULTANTS, INC. FOR A SPECIFIC PROJECT, TAKING INTO CONSIDERATION THE SPECIFIC AND UNIQUE REQUIREMENTS OF THE PROJECT. REUSE OF THIS DRAWING OR ANY INFORMATION CONTAINED IN THIS DRAWING FOR ANY PURPOSE IS PROHIBITED UNLESS WRITTEN PERMISSION FROM UTAH TELECOMMUNICATIONS OPEN INFRASTRUCTURE AGENCY (UTOPIA) IS GRANTED. |     |     |

FILE





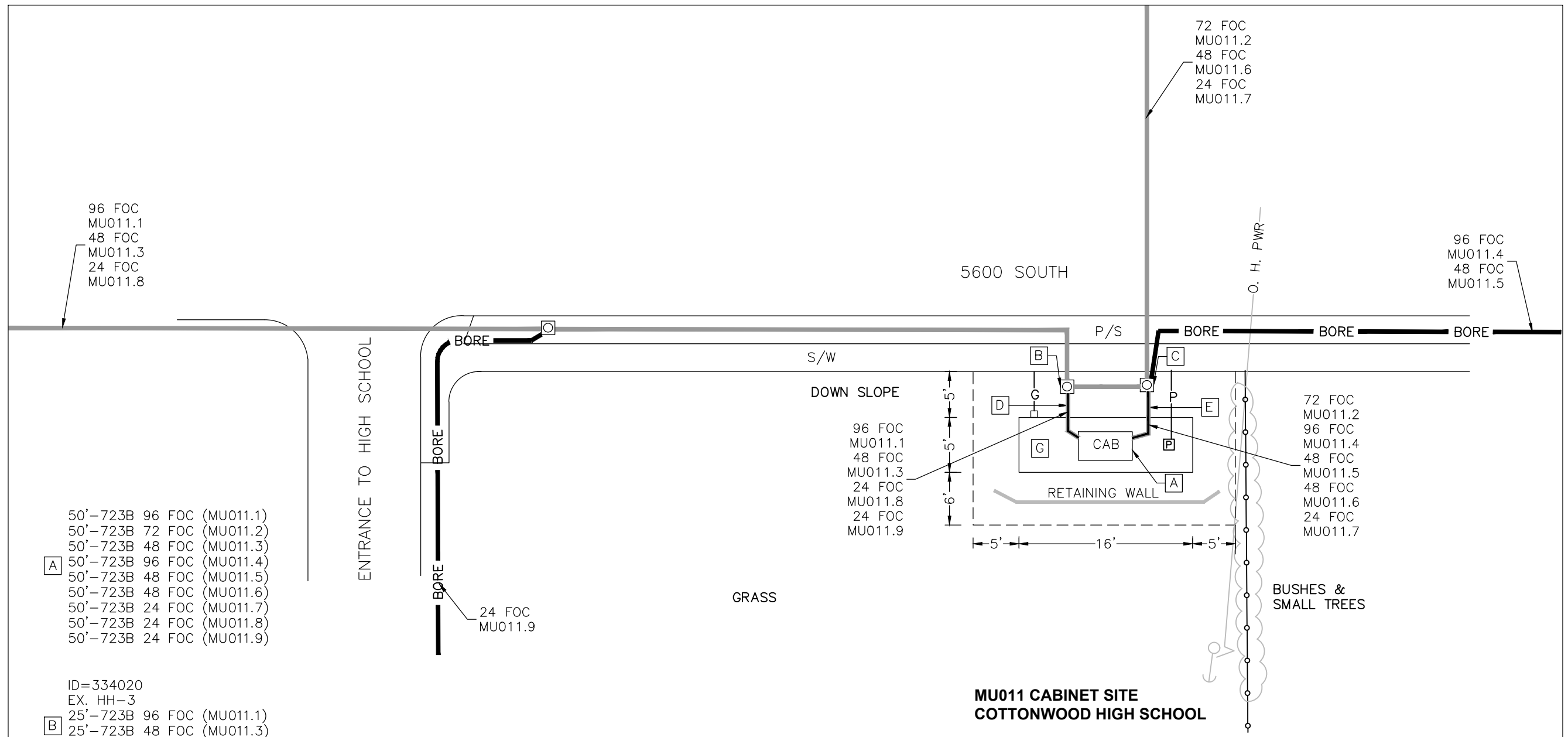
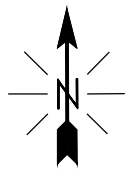












**NOTES:**

**LEGEND**

- FOOTPRINT BORDER
- STREET CENTERLINE
- PARCEL BOUNDARIES
- OHP OVERHEAD POWER
- W WATER LINE
- SS SEWER LINE
- RAILROAD
- EOP EDGE OF PAVEMENT
- BOC BACK OF CURB
- R\W RIGHT-OF-WAY
- S\W SIDEWALK
- DROP WIRE
- BORE
- A AERIAL FIBER
- SUCCESS BASED CONDUIT
- TRENCH
- EXISTING FIBER

- THE PREFERRED CONSTRUCTION METHOD IS DIRECTIONAL BORE. THE FOLLOWING PLACEMENT WILL BE USED DURING FIELD DESIGN:
1. BACK OF CURB
  2. BACK OF SIDEWALK (WITHIN UTILITY EASEMENT)
  3. BENEATH SIDEWALK  
NOTE: CONCRETE RESTORATIONS WILL BE REQUIRED
  4. EDGE OF ROAD (ASPHALT) NOTE: ASPHALT RESTORATION WILL BE REQUIRED

CALL BEFORE DIGGING  
BLUE STAKES UTILITY  
1(800) 662-4111

96 FOC MU011.1  
48 FOC MU011.3  
24 FOC MU011.8

50'-723B 96 FOC (MU011.1)  
50'-723B 72 FOC (MU011.2)  
50'-723B 48 FOC (MU011.3)  
50'-723B 96 FOC (MU011.4)  
50'-723B 48 FOC (MU011.5)  
50'-723B 48 FOC (MU011.6)  
50'-723B 24 FOC (MU011.7)  
50'-723B 24 FOC (MU011.8)  
50'-723B 24 FOC (MU011.9)

ID=334020  
EX. HH-3  
25'-723B 96 FOC (MU011.1)  
25'-723B 48 FOC (MU011.3)  
25'-723B 24 FOC (MU011.8)

ID=334019  
EX. HH-3  
25'-723B 72 FOC (MU011.2)  
25'-723B 96 FOC (MU011.4)  
25'-723B 48 FOC (MU011.5)

ID=367489  
6'-323 24 FOC  
6'-323 48 FOC  
6'-323 96 FOC  
IN EX. CONDUIT

ID=367488  
6'-321 24 FOC  
(2)6'-321 48 FOC  
6'-323 72 FOC  
6'-323 96 FOC  
IN EX. CONDUIT

**MU011 CABINET SITE  
COTTONWOOD HIGH SCHOOL**



|                 |                   |   |                   |
|-----------------|-------------------|---|-------------------|
| UTOPIA          |                   | JOB NUMBER  | REV               |
| 2020 PROJECT    |                   |   | 3                 |
| MU011-001- UTAH |                   | DRAWING NUMBER  |                   |
|                 |                   | MU011-019A  |                   |
| 2               | DCID'S            | 4/2021  | MSC MSC MSC       |
| 1               | ISSUED FOR REVIEW | 12/2020   | MSC MSC MSC       |
| REV             | REVISIONS         | DATE  | DRN CKD DSGN APPD |
| DRN             | MSC               |   |                   |
| CKD             | MSC               |   |                   |
| SCALE: NTS      |                   | THIS DRAWING WAS PREPARED BY MID-STATE CONSULTANTS, INC. FOR A SPECIFIC PROJECT, TAKING INTO CONSIDERATION THE SPECIFIC AND UNIQUE REQUIREMENTS OF THE PROJECT. REUSE OF THIS DRAWING OR ANY INFORMATION CONTAINED IN THIS DRAWING FOR ANY PURPOSE IS PROHIBITED UNLESS WRITTEN PERMISSION FROM UTAH TELECOMMUNICATIONS OPEN INFRASTRUCTURE AGENCY (UTOPIA) IS GRANTED. |                   |







































